

# **RTS ELECTRO**

## **Company Overview**

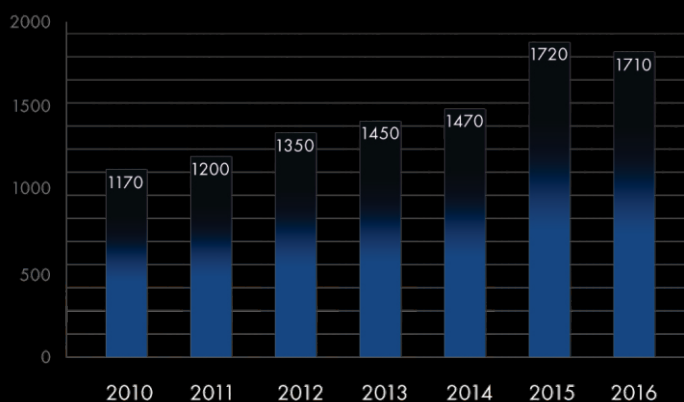
**-Bucharest-  
-2017-**



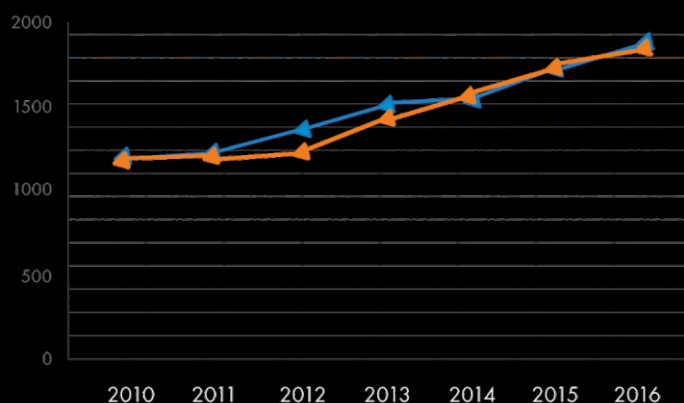
Since 2002 **RTS Electro** has been importing and distributing electrical and automation equipment for electrical low and medium voltage systems and grids.

"In 2007 we established our own production department, we invested in human resources, in product development. Today we are proud of our highly qualified personnel and modern production unit where we can equip any kind of complex electrical panel. The fact that our services include customisations depending on the client's need, confirms that we are a client oriented company, offering also strong client support."

- Private ownership 100%
- Based in Bucharest
- Romania, Bulgaria, Estonia, Germany, Holland and Hungary and plans for Serbia, Croatia and Moldova
- Number of employees: 15, 5 of which are project based
- Main area of business: - import, distribution and sales of low voltage materials and equipment; production of control and distribution panels, Building Management System (panels, cabling and software) and elevator control panels;
- High growth rate, above the average of the industry



The first graph illustrates the evolution of our overall business Turnover, from the year 2009 up to 2016. We estimate that the year 2015 will have an increase of 10 to 15% based on the values and tendencies of the market. The presented amounts are thousands of euro.



The orange line marks the evolution of the construction market value for the period 2009-2016. It is expressed in tens of millions of euro. The blue line marks the evolution of our company for the same period, expressed in thousands of euro. Ever since the global crisis, our company has maintained an upper hand, having a better situation than the market as a whole. This was possible due to our quick adaptation and efforts and a good strategy for the given conditions.



Our products are capable of responding to the latest necessities and demands in distributing electrical energy to homes, stores or even industrial manufacturers. We are highly competent in developing automation panels for any application including the industrial sector.

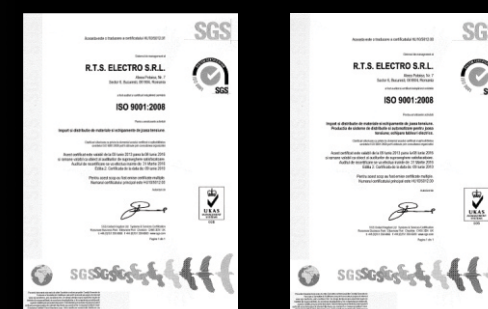
### Productie

- Started in 2008;
- Began with power distribution panels for low voltage projects;
- Developed further to BMS panels and industrial automation;
- Under development: - automation panels for wind windmills. In partnership with a Dutch company;
- In 2014 we established a new department for maintenance and service who had a in force start - contracts with National Bank of Romania, "V. Babes" hospital and American International School;

### Expansiune

- Began by penetrating the market of Bulgaria with the current array of business;
- Continued with expansion to Hungary, Germany and Estonia;
- Further developments are the markets of Serbia, Croatia, Montenegro, Moldova;
- Diversification of the product line and services by focusing on complementary domains like facility management;

**RTS Electro** works with international producers and manufacturers, well known in the electrical market:



Starting 2006 we adopted the international quality standards management system ISO 9001:2000 and later ISO 9001:2008, certified by SGS.



## Petrom City Bucharest

**Petrom City includes five main buildings:**

- two oval administrative buildings, united together, named "The Infinity Building"
- a classical shape construction
- a Data Center and an electrical plant of 5 MW
- a parking for 900 cars
- and also a conference center, own training center, medical center, restaurant, coffee shop, informal meeting area, landscaping inside and outside the buildings

RTS Electro collaborated within this project with more than 150 de companies. For this project our company has supplied the BMS Panels for the Web Building and extensions of the distribution panels and cabling for the Server Room situated in the Web Building.

### Upground Offices Bucharest, Romania

Upground Offices is an office building situated in the northern part of Bucharest. For this project our company has supplied the electrical equipment and the electrical panels for the fire dampers. Project total value was approximately, **115.000 euro.**



### American International School Bucharest, Romania

RTS Electro provided the electrical installations and the entire integrated monitoring system for all utilities. The system monitors, controls and protects all range of the utilities using the most competitive SIEMENS and GE equipment (control devices, power analyzers, tele-management with built-in web server program). Total project value was approximately **75,000 euro.**



### Carrefour Shopping Mall Bucharest, Romania

Carrefour Shopping Hypermarket is part of the Carrefour chain of hypermarkets. For this project our company has supplied the power distribution panels for the shopping galleries. Total project value was approximately **55,000 euro.**



### Willbrook Platinum Center Bucharest, Romania

Willbrook Platinum center is a complex of buildings designed for office use and convention center, situated on the outskirts of Bucharest. For this project our company has supplied the BMS panels. Project total value was approximately **80.000 euro.**



### National Bank of Romania Bucharest, Romania

RTS Electro provided for the historical buildings in Bucharest of the National Bank of ROMANIA, and also for the other building branches, situated in the main cities of Romania, an dedicated supervision system of the electrical parameters. The system monitors, controls and protects all range of the electrical equipment using the most competitive CIRCUTOR solutions (control devices, power analyzers, built-in web server Power STUDIO SCADA energy management software). Total project value was approximately **66,000 euro**.



### Marriott Hotel Bucuresti, Romania

The JW Marriott Grand Hotel in Bucharest needs no further description. For this project our company has replaced the old BMS equipment and replaced it with the latest generation of BMS equipment provided by Siemens. Project total value was approximately, **38.000 euro**.

### Cora Hypermarket Bucharest, Romania

Cora Romania is part of the Louis Delhaize chain of hypermarkets. For this project our company has supplied power supply panels (generator and ATS panel) for fire and security. Project value was approximately **12,000 euro**.



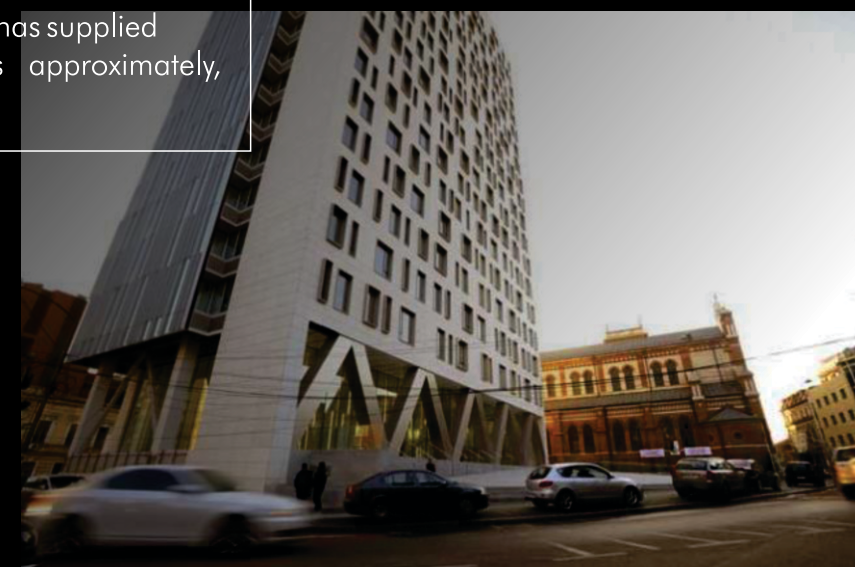
### Cascade Park Plaza Bucharest, Romania

Cascade Park Plaza is a class A office building situated in Bucharest. For this project our company has supplied the BMS Panels. Project total value was approximately, **44.000 euro**.



### Cathedral Plaza Bucuresti, Romania

Cathedral Plaza is an office building situated in center of Bucharest. For this project our company has supplied the BMS Panels. Project total value was approximately, **65.000 euro**.





Thank you for  
your time!

Address:  
Petru Rares Street, no.11  
Sector 1, Bucharest  
Tel: +40 21 260 1021  
+40 21 260 1022  
Fax: +40 21 222 3097  
Email: [office@rtselectro.ro](mailto:office@rtselectro.ro)  
Web: [www.rtselectro.ro](http://www.rtselectro.ro)